



Environmental Services Commission

City of Tacoma | Environmental Services Department

Thursday, November 18, 2021





Agenda



- Welcome
- ESD Financial Update: Christina Curran
- Wastewater Comprehensive Plan & Outreach: Teresa Peterson
- Other Items of Interest
- Adjournment



● ● ● Presentation

Environmental Services Department Financial Update

Presenter: Christina Curran, Budget, Rates, & Strategic Planning

Email: christina.curran@cityoftacoma.org

Phone: 253-591-5861



Wastewater Comprehensive Plan & Outreach

Presenter:

Teresa Peterson, Professional Engineer (Science & Engineering)

Email: tpeterson@cityoftacoma.org

Phone: 253.392.4385



History

- Previous Plans:
 - CTP Facility Plan (2002)
 - NETP Facility Plan (1996)
 - NETP Re-Rate Study (2012)
(Current)
- Wastewater Comprehensive Sewer Plan
 - Not a regulatory required step at this time





● ● ● Wastewater Comprehensive Plan

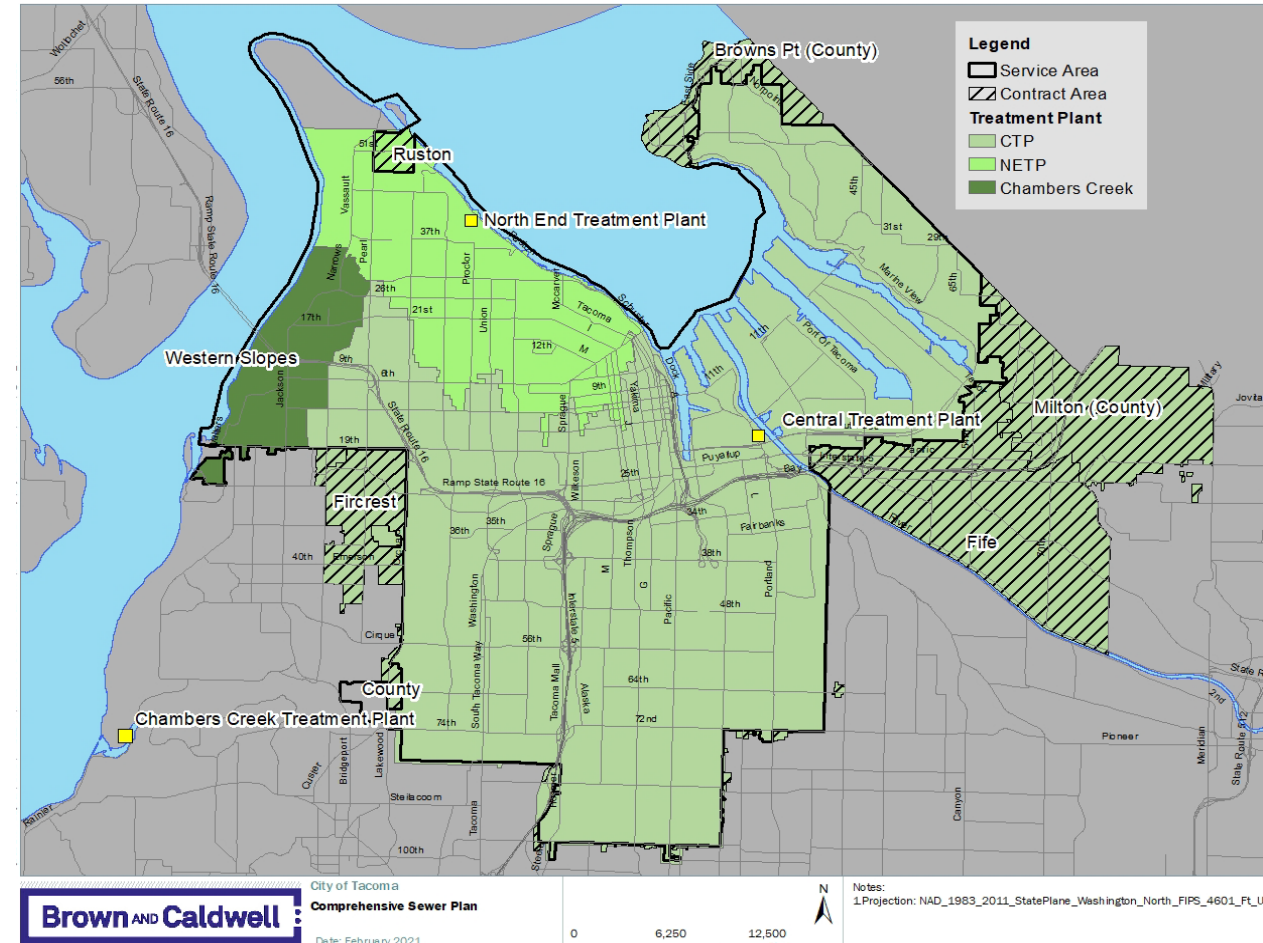
Why we need a Plan:

- Aging Infrastructure
- Increased Population Growth
- Future Regulations
- Alignment with City Initiatives and ES Goals
 - Provide Equitable Service
 - City Climate Action Plan



Wastewater Existing Infrastructure

- 700 miles of Sanitary Sewer Collection Pipe (1880s – Present)
- 14,800 Service Manholes
- 45 Pump Stations
- 2 Wastewater Treatment Plants
 - Central Treatment Plant
 - Built 1952
 - Phase I: 1979
 - Phase II: 1988
 - Phase III: 2008
 - North End Treatment Plant
 - Built 1968
 - Upgrade: 1998





Goals for the Plan

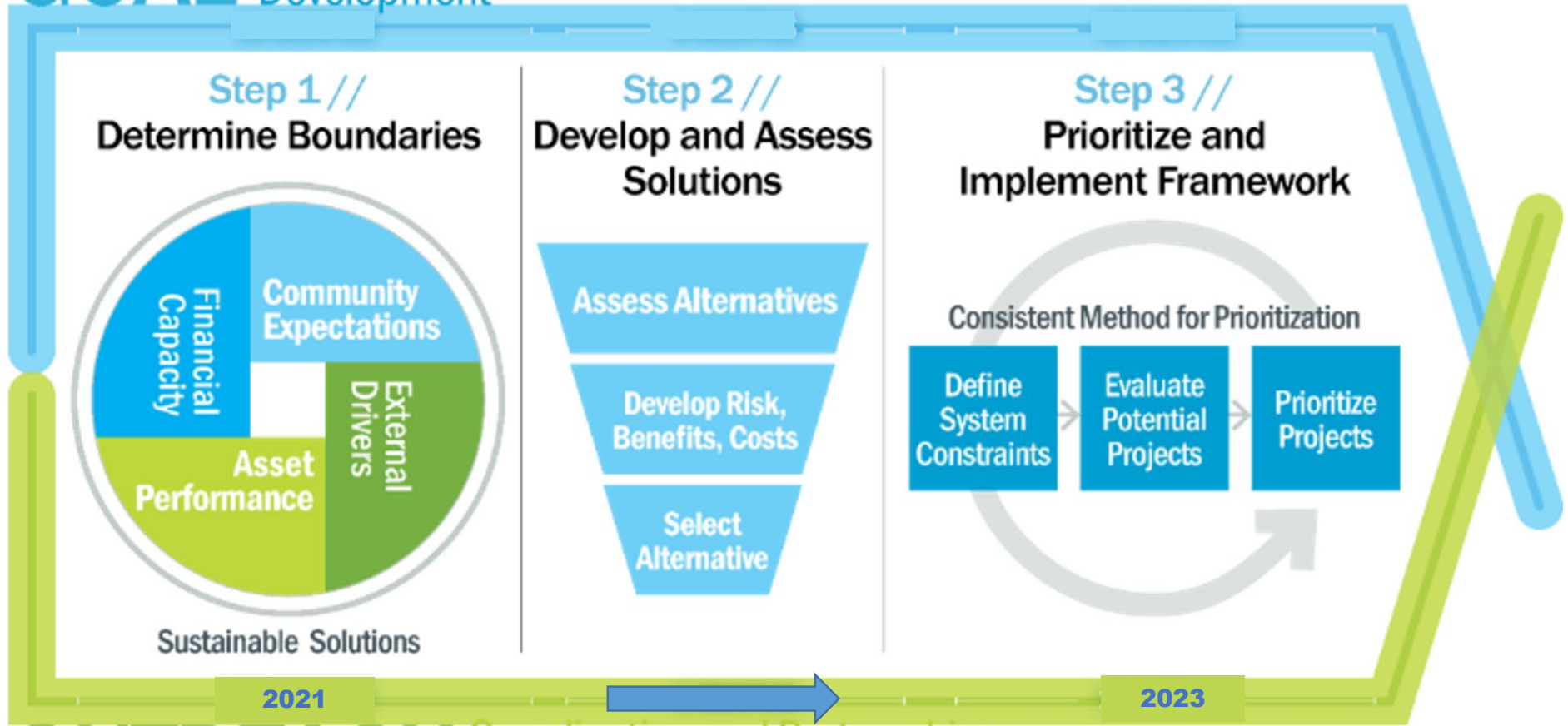
- Align Wastewater Management goals with broader City initiatives
- Identify Community Expectations
- Incorporate equity and social justice considerations
- Develop Capital Improvement Plan (CIP) that is transparent and consistent
- Evaluate City's financial capacity





••• WW Comprehensive Plan Approach

GOAL Development



OUTREACH Coordination and Partnerships

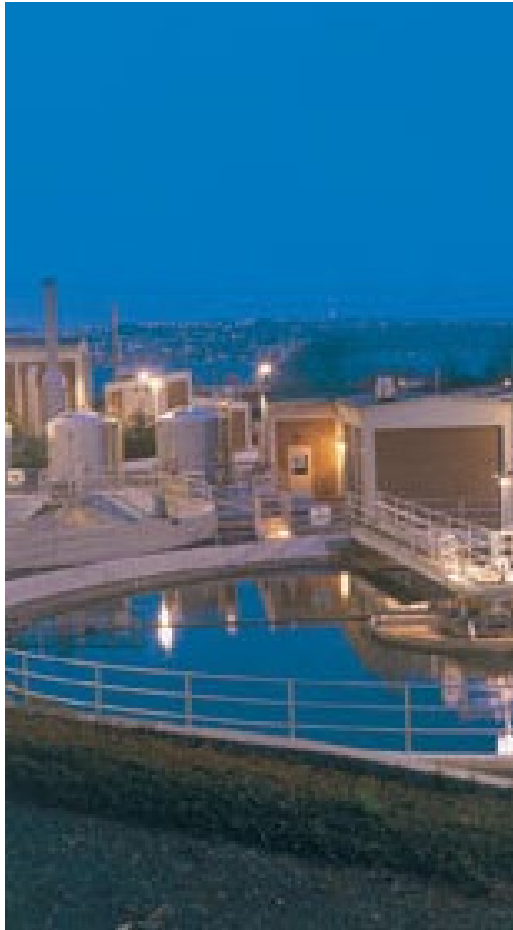


Phase 1 Boundary Conditions

- Financial and Organizational Capacity
- Asset Condition and Performance
- External Drivers
 - Population Projections
 - Flow and Load Projections
- Stakeholder Expectations



● ● ● Stakeholder Engagement



- Meeting with internal and external stakeholders
- Inform stakeholders of the Plan through interview sessions (one-on-one and with community organizations)
- Stakeholder input will inform subsequent broader community survey



● ● ● Key Stakeholders and Tribal Nations

External

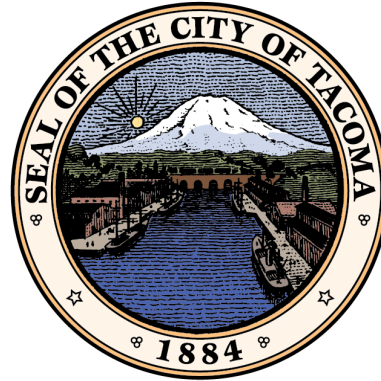
- Department of Ecology
- Port of Tacoma
- Environmental Organizations
- Pierce County, Fircrest, Fife, Ruston
- Eastside Collaborative
- South End Community of Focus
- Hilltop Action Coalition
- Centro Latino
- Asian Pacific Cultural Center

Tribal Nations

- Puyallup Tribe

Internal

- Environmental Services Commission
- Community and Economic Development
- Sustainable Tacoma Commission
- Tacoma Public Utilities
- Planning Commission
- Infrastructure, Planning and Sustainability Committee
- City Manager
- City Council



Environmental Services Commission

City of Tacoma | Environmental Services Department

**Next ESC Meeting:
February 10, 2022 @ 4 p.m.**

